

MLS Area LL

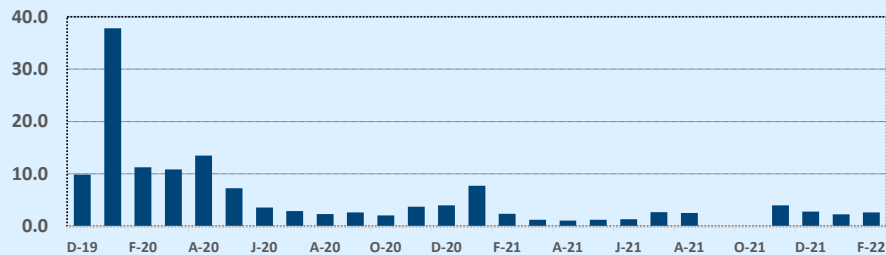
Residential Statistics

Listings	This Month			Year-to-Date		
	Dec 2021	Dec 2020	Change	2021	2020	Change
Single Family Sales	19	21	-9.5%	287	314	-8.6%
Condo/TH Sales	6	2	+200.0%	40	53	-24.5%
Total Sales	25	23	+8.7%	327	367	-10.9%
New Homes Only	--	4	--	30	43	-30.2%
Resale Only	25	19	+31.6%	297	324	-8.3%
Sales Volume	\$17,270,900	\$19,476,550	-11.3%	\$282,197,904	\$256,193,569	+10.2%
New Listings	20	17	+17.6%	376	455	-17.4%
Pending	--	--	--	--	--	--
Withdrawn	11	10	+10.0%	28	87	-67.8%
Expired	11	10	+10.0%	28	87	-67.8%
Months of Inventory	2.7	4.0	+10.4%	N/A	N/A	--

Average	This Month			Year-to-Date		
	Dec 2021	Dec 2020	Change	2021	2020	Change
List Price	\$704,844	\$866,652	-18.7%	\$885,433	\$730,993	+21.1%
List Price/SqFt	\$312	\$277	+12.5%	\$331	\$262	+26.3%
Sold Price	\$690,836	\$846,807	-18.4%	\$862,991	\$698,075	+23.6%
Sold Price/SqFt	\$308	\$274	+12.6%	\$326	\$251	+29.6%
Sold Price / Orig LP	98.2%	98.6%	-0.3%	98.4%	95.8%	+2.7%
Days on Market	52	132	-60.4%	68	108	-36.9%

Median	This Month			Year-to-Date		
	Dec 2021	Dec 2020	Change	2021	2020	Change
List Price	\$695,000	\$498,000	+39.6%	\$589,900	\$449,000	+31.4%
List Price/SqFt	\$260	\$235	+10.3%	\$259	\$217	+19.5%
Sold Price	\$670,000	\$479,500	+39.7%	\$574,900	\$428,000	+34.3%
Sold Price/SqFt	\$256	\$270	-5.4%	\$259	\$208	+24.8%
Sold Price / Orig LP	97.7%	97.5%	+0.3%	99.0%	96.4%	+2.7%
Days on Market	36	90	-60.0%	24	73	-67.1%

Months of Inventory - Last Two Years

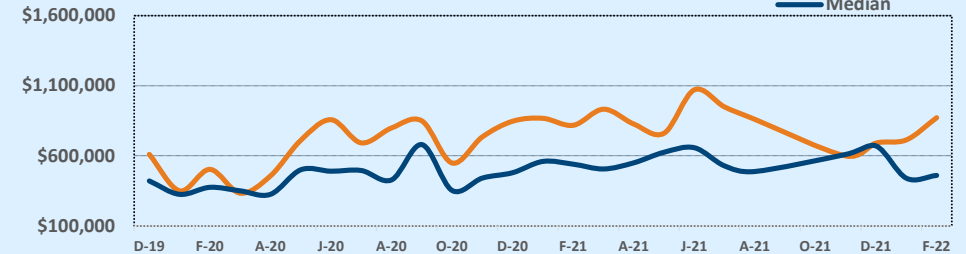


Independence Title

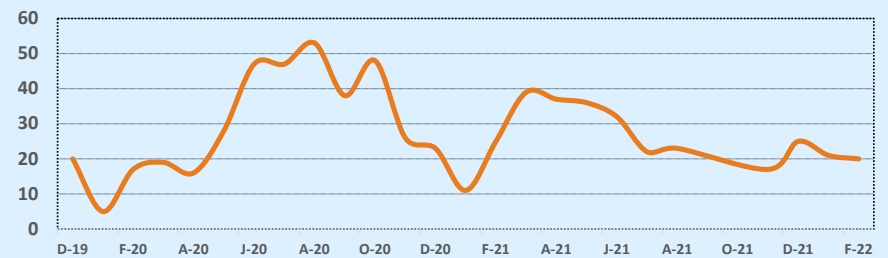
December 2021

Price Range	This Month			Year-to-Date		
	New	Sales	DOM	New	Sales	DOM
\$149,999 or under	2	1	3	20	14	47
\$150,000- \$199,999	2	--	--	14	9	40
\$200,000- \$249,999	1	1	3	21	20	31
\$250,000- \$299,999	3	2	25	23	9	40
\$300,000- \$349,999	1	3	28	17	22	60
\$350,000- \$399,999	1	--	--	34	26	52
\$400,000- \$449,999	3	1	30	12	13	68
\$450,000- \$499,999	--	2	4	25	24	58
\$500,000- \$549,999	1	1	107	16	17	29
\$550,000- \$599,999	--	1	65	15	20	95
\$600,000- \$699,999	1	2	29	37	30	81
\$700,000- \$799,999	1	1	178	17	20	81
\$800,000- \$899,999	1	3	112	25	14	58
\$900,000- \$999,999	--	3	68	18	12	63
\$1M - \$1.99M	1	4	44	47	47	68
\$2M - \$2.99M	1	--	--	21	17	91
\$3M+	1	--	--	14	13	205
Totals	20	25	52	376	327	68

Average & Median Sales Price - Last Two Years



Number of Sales - Last Two Years



Based on information from the Austin Board of REALTORS® (alternatively, from ACTRIS). Neither the Board nor ACTRIS guarantees or is in any way responsible for its accuracy. The Austin Board of REALTORS®, ACTRIS and their affiliates provide the MLS and all content therein "AS IS" and without any warranty, express or implied. Data maintained by the Board or ACTRIS may not reflect all real estate activity in the market.